

GIORGIO GRAESAN  
and Friends



o1 - 2020/5 + 0,750 Colore  
o2 - 2020/5 + 0,250 Colore  
o3 - 2020/5 + 0,062 Colore

Preparazioni:

Pennello: Primus Sabbia

Guanto: Primus Sabbia

Rullo: Primus Naturale

Il video applicativo è disponibile nell'apposito **DVD** o su  
**[www.giorgiograesan.it/video/oro](http://www.giorgiograesan.it/video/oro)**

I segni delle pennellate sono evidenziati dalla illuminazione con luce radente.



ZA

ZB

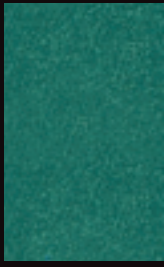
ZC

ZD

ZE

ZF

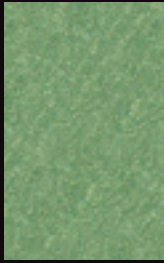
ZG



01



02



03

Colori indicativi - Suggested colours - Couleurs indicatives - Hinweisende Farben - Colores sugerencias - Χρόματα προτάσει.

KB

KA

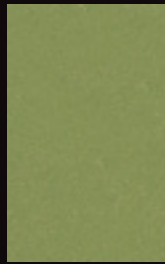
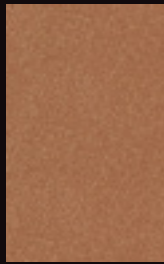
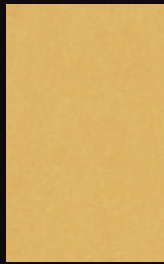
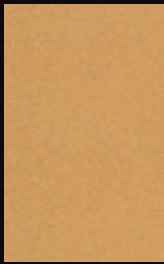
KF

KC

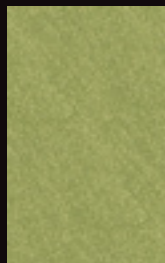
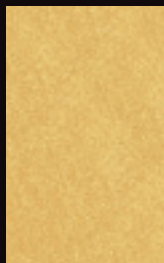
KD

KG

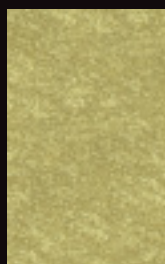
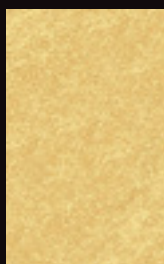
KE



01



02



03



Oro Pallido 2010



Oro Ricco 2020

AR

AA

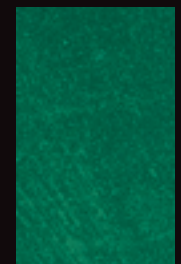
AL

AM

AF

AV

AZ



01



02



03

NA

NB

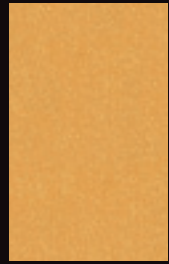
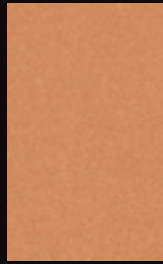
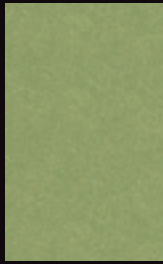
NS

NL

NR

NO

NY



o1



o2



o3

SC

SB

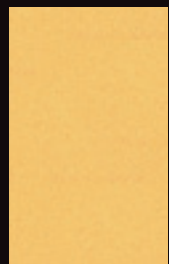
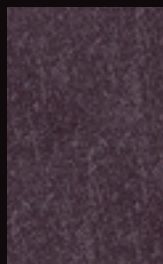
SD

SE

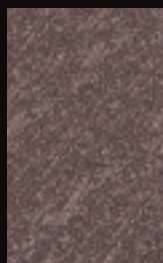
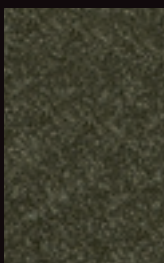
SA

SV

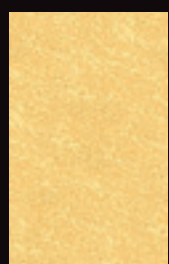
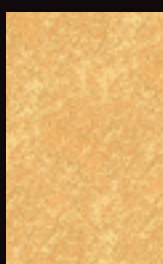
SG



o1



o2



o3

# GIORGIO GRAESAN

and Friends

**Colore & Oro** è un prodotto disponibile in 107 tonalità.

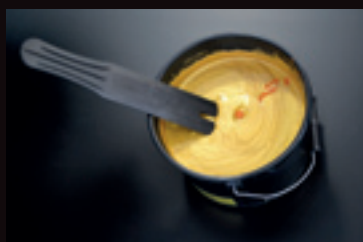
Composto di scaglie madreperla oro, riscalda le tue pareti  
con iridescenti riflessi dorati.

Si stende in due passaggi di prodotto applicabili con un pennello,  
a guanto o rullo, dopo la preparazione della parete  
con il nostro PRIMUS SABBIA.

Totalmente lavabile con saponi non aggressivi, è un materiale non infiammabile.



1. Applicazione Primus Sabbia



2. Colorare il prodotto se necessario



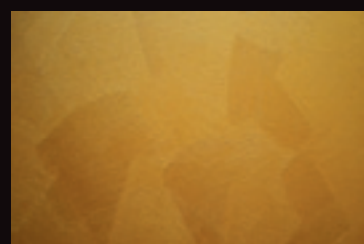
3. Miscelare Oro



4. Prima mano



5. Seconda mano



6. Lasciare asciugare

<b>CONSUMI:</b>	7/8 mq al litro
<b>ESSICCAZIONE:</b>	dalle 6 alle 8 ore
<b>CONFEZIONI:</b>	da 1, 2,5 e 5 litri
<b>PESO SPECIFICO:</b>	1,10 kg/litro circa
<b>CONTENUTO VOC:</b>	massimo 33 g/l